



Hampshire and Isle of Wight Elective Hub Update Briefing

1. Current update on progress

In the beginning of 2022 Hampshire and Isle of Wight (HIOW) NHS leaders came together and agreed that the construction of a new dedicated 'elective Hub' was the best approach to address the backlog waiting list created by the COVID-19 pandemic.

Since then, the programme has been developing these proposals and in June 2023 NHS England approved the Business Cases to build both the HIOW Orthopaedic Elective Hub and at the same time the Hampshire Hospitals new Orthopaedic Outpatient Facility on the Royal Hampshire County Hospital site in Winchester.

The design of both projects has progressed and the tenders for the works have been returned and were within the affordability envelope. On 15 February, the Board of Hampshire Hospitals NHS Foundation Trust approved moving into the construction phase of the programme.

2. Elective Hub proposal

The Hub will contain two lamina flow theatres and a twenty-eight bedded ward with associated facilities. The unit will be built within the existing Burrell Wing at the Royal Hampshire County Hospital. It will have a separate entrance and will be ringfenced solely for the purpose of treating elective orthopaedic patients requiring arthroplasty procedures (hip and knee replacements).

The Hub will initially be shared by both Hampshire Hospitals NHS Foundation Trust and University Hospital Southampton NHS Foundation Trust, who will offer patients referred to their hospitals who meet the criteria the choice of having their procedures within the Hub or at their home trust site. Both the Isle of Wight NHS Trust and Portsmouth University Hospitals NHS Trust have opted, at this time, not to deliver any additional operating from the Hub. However, the Hub can provide additional capacity to both Trusts in the future should they require.

The Hub will operate six days a week, with inpatient facilities operating over seven days, accommodating weekends and extended weekdays to maximise the capacity available.

The Hub will deliver approximately 2,400 procedures each year. Patients will be referred by their GP to their home Trust. If a patient is identified as requiring an elective procedure and meet the criteria for the Hub, they will be offered the choice to be treated at the facility. Patients who choose to have their procedure undertaken at the Hub will have their initial pre-assessment undertaken within their home Trust with the final stages being managed by the Hub. To ensure continuity of care, consultants from the current acute trusts (Hampshire Hospitals and University Hospitals Southampton) will operate on their patients at the Hub. In approximately 90% of the cases this final element of pre-assessment will be undertaken remotely, and any x-rays or scans needed can be provided at the patient's nearest diagnostic centre.

Following their procedure, any follow up required will be undertaken by the patient's originating home Trust.

National best practice in arthroplasty shows that for many patients it is now possible to have a hip or knee replacement undertaken using local anaesthetic and in doing so commence rehabilitation within hours of the operation, enabling patients to be seen, treated and discharged on the same day. The aim of the Hub is to provide this best practice to enable some patients to be treated on the day.



Planning and design work is well underway, and the programme is collaborating with the contractor Integrated Health Projects (IHP) and AD Architects to develop the building specification. The plans involve refurbishing a floor within Burrell Building to create two theatres and the associated inpatient facilities. The diagram below sets out the proposed Hub floor plan:

1:200 LAYOUT - BURRELL WING BUILDING - LEVEL C
THEATRES & WARDS



5. Hampshire Hospitals' new orthopaedic outpatient facility

At the same time as developing the plans for the new elective Hub as outlined above, Hampshire Hospitals will also build a new outpatient facility specifically for orthopaedics. The new outpatient facility will be located adjacent to the Florence Portal Building on the Royal Hampshire County Hospital site in Winchester (see plan below). Planning permission for the new facility has been granted by Winchester City Council.



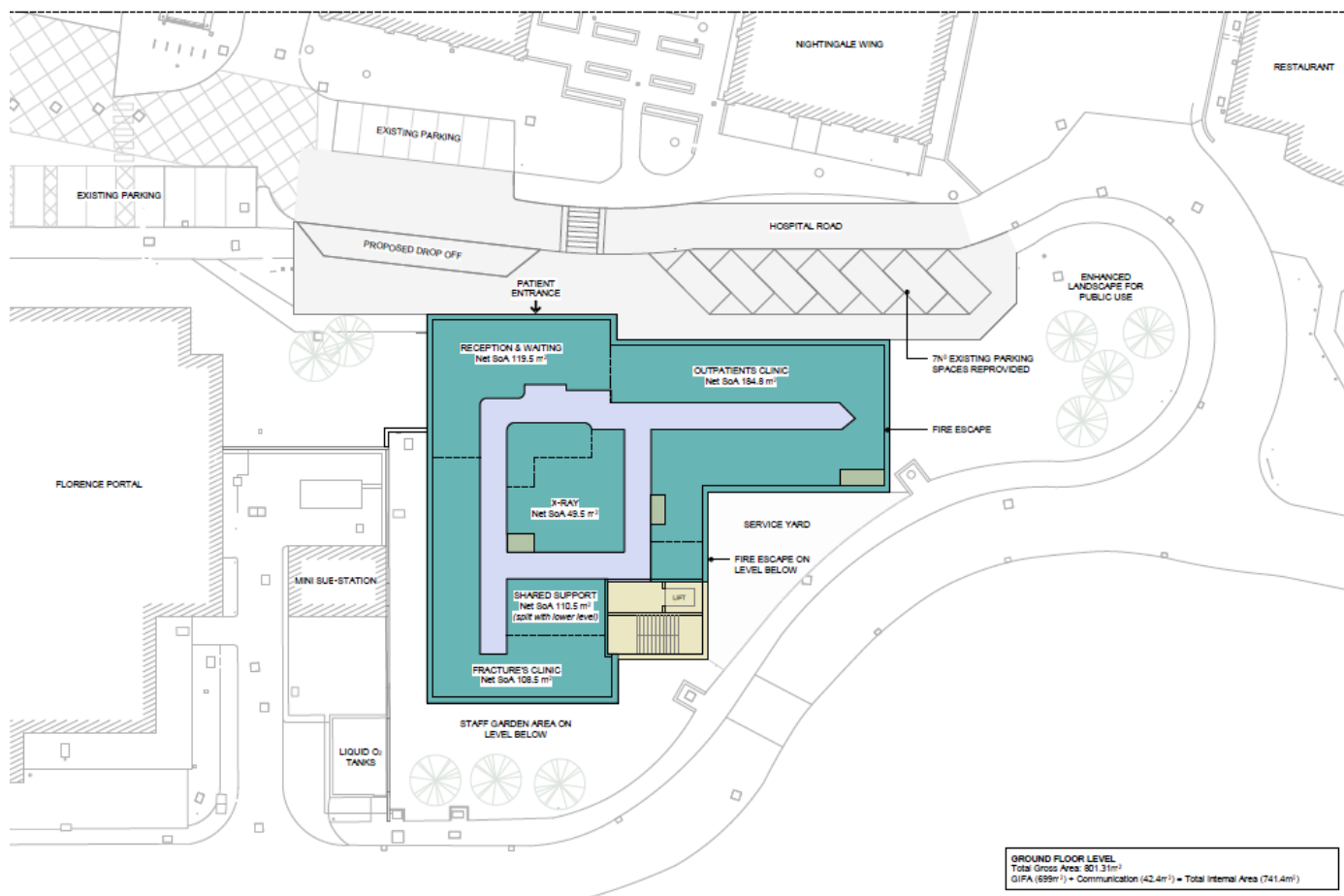
A key rate-limiting step to the current orthopaedic service in Winchester is that the facility has a maximum of five outpatient rooms to undertake both elective and non-elective activity. The new department will provide eight outpatient rooms; a co-located plain film x-ray service with an adjacent treatment room and four fracture clinic assessment booths with an adjacent two bay plaster room.

The new facility will meet the forecast growth in elective and non-elective demand for orthopaedic services, enable implementation of a 'one-stop' patient pathway approach and reduce patients' first appointment waiting time.

Activities delivered in the Orthopaedic Outpatient Facility will include:

- specialist advice and support, clinical consultation, diagnosis, and treatment planning and delivery for orthopaedic patients
- therapy consultation, diagnosis and treatment in conjunction with a multi-disciplinary allied health team, including physiotherapy, occupational therapy and dietetics
- application and removal of plaster casts

The location of the new outpatient facility on the Royal Hampshire Hospital Site in Winchester is shown below:



1 500 PROPOSED GROUND LEVEL - OPD BUILDING 1.500
 1:200



The floor plan for the new Orthopaedic Outpatient Facility is set out below:

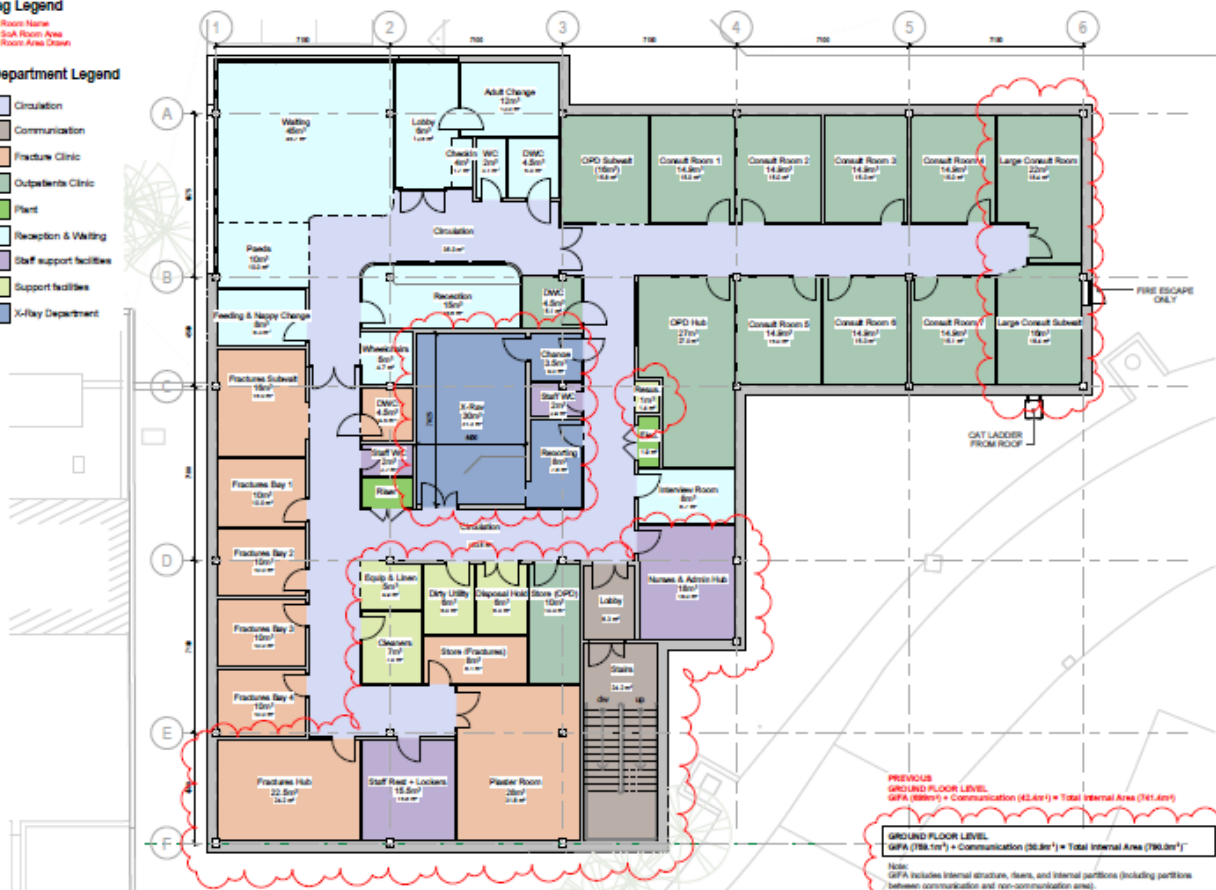
1:200 LAYOUT - ORTHOPAEDIC OUTPATIENT DEPARTMENT

Room Tag Legend

Staff Room - Room Name
 12 m² - S&A Room Area
 11.5m² - Room Area Drawn

Department Legend

- Circulation
- Communication
- Fracture Clinic
- Outpatients Clinic
- Plant
- Reception & Waiting
- Staff support facilities
- Support facilities
- X-Ray Department



1 L 01 - Level 01/ Ground Level Plan
 1:100

PREVIOUS
 GROUND FLOOR LEVEL
 GFA (889m²) + Communication (42.6m²) = Total Internal Area (741.6m²)

GROUND FLOOR LEVEL
 GFA (788.1m²) + Communication (88.9m²) = Total Internal Area (796.0m²)

Note:
 GFA includes internal structure, stairs, and internal partitions (including partitions between communication and non-communication areas).



3. Programme timeline

Now that approval has been given by the Trust Board, the programme can move into the construction phase of the programme with the following timetable:

